

Role of ICT in Regional Integration

S.P. Sahu

Senior Technical Officer

Security & Facilitation

World Customs Organization





Regional integration and ICT

- What is Regional Integration?
 - Closer cooperation among countries in a region;
 - Promotion of economic growth through regional trade;
- Many Regional Integration Arrangements in Africa
 - A wide range exists: FTA → Customs Union → Common Market → Economic Union
- ICT is an integral tool for socio-economic development .
 - ICT for improving global competitiveness of the region





Infrastructure for Regional integration

- **Transport Infrastructure**
 - Regional Transport Corridors
 - Regional gateway port & airport connectivity
- **Legal Infrastructure**
 - Harmonized trade procedures and trader interfaces
 - Facilitating movement of transport means & transport workers
 - External Trade Tariff & Rules of Origin
- **Supply-chain ICT infrastructure**
 - eCom/EDI facilities / Electronic Single Windows
 - Electronic payment & settlement infrastructure





Regional Integration: Business Processes Affected

- Publication of commonly managed rules and procedures
- Declaration Management
- Goods Classification & Rules of Origin Management
- Trader Identity Management
- Supply-Chain Security Management
- Transit Management & Guarantee Management
- Customs Receipts & Debt Management
- Risk Management (Compliance & Security Risks)





Regional Integration: Information Systems -I

- Declaration Processing & Data Sharing
 - Standardization of goods declarations (Examples: EU:SAD //SACU:SAD500; //EAC:SAD; MERCOSUR//DUAM; CA4//DUCA; ASEAN//ACDD)
 - Common Customs Procedure Codes
 - Linkages with intra-region trade in domestic excisable goods
 - Agreement on supporting documents
 - Agreed inspection & testing facilities; authorize parties & authorized signatories
 - Authorization and Control results
 - Other common master data to be published online





Regional Integration: Information Systems - II

- Transit Management
 - Transit information exchange
 - EU: NCTS
 - EAC: RADDEX
 - Guaranty management
 - Transit tracking
 - Eg: EU Transit MRN Follow-up website
 - eTIR





Regional Integration: Information Systems - III

- Goods Classification & Rules of Origin
 - Online access to Common external Tariff & Non-tariff management:
 - EU: TARIC; EBTI; SUSP; QUOTA
 - SACU: Jacobsens Harmonized Customs Tariff Online
 - CARICOM Single Market and Economy (CSME): Common external tariff & Common protective policy
 - ICT-based Origin administration
 - Application of common Rules of Origin
 - Certificates of Origin information exchange





Regional Integration: Information Systems - IV

- Trader Identification & Supply-Chain Security
 - Trader Identification at a regional level
 - Eg EORI
 - Authorization
 - AEO program administration
 - Mutual recognition of AEOs
 - Advance Reporting
 - Common Risk Assessment profiles





ICT in Regional Integration: WCO Instruments

- Globally Networked Customs
- Co-ordinated Border Management
 - Compendium on How to Build a Single Window Environment
- SAFE Framework of Standards
 - Integrated Supply Chain Management Guidelines
 - Trader Identification & AEO
- WCO Data Model
- UCR



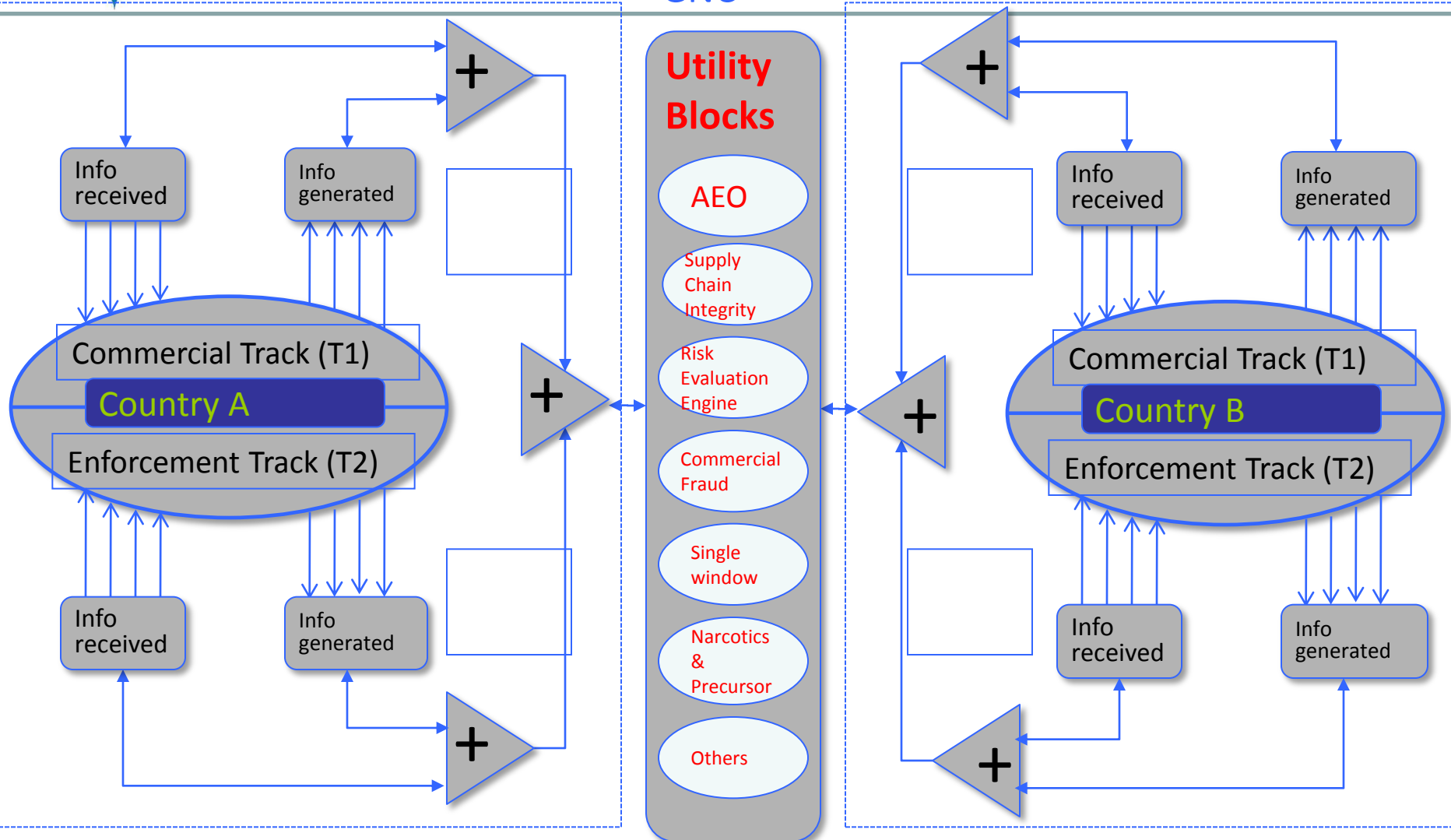


Globally Networked Customs: Ideal for Regional IT Connectivity

National Domain

GNC

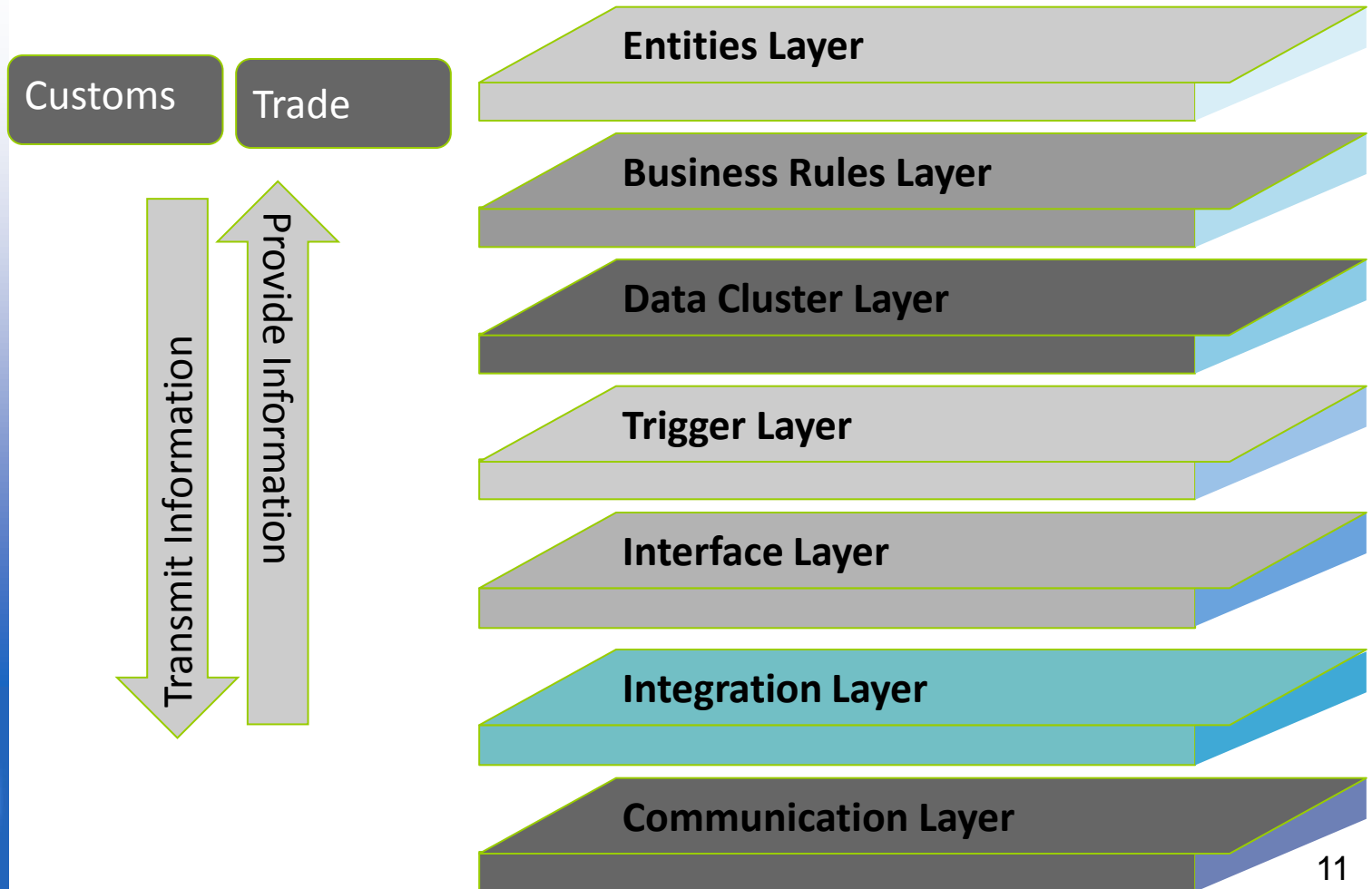
National Domain





Utility Blocks

The Heart of GNC





WCO Initiatives in Africa for Regional Integration: Examples

- **SACU**
 - IT Connectivity is an important part
 - Independent evaluation of IT pilots
 - South Africa –Swaziland - Community Hub
 - Namibia-Botswana – Cloud Computing
 - Pilot operators for Preferred Trader scheme identified
- **East African Community**
 - AEO
 - Fast Track Clearance
 - Coordinated Border Management
 - Effective Private sector Participation
- **ECOWAS**
 - Transit Management





WCO Initiatives in Africa for Regional Integration: Advantages

- Regional collaboration
- Regional facilitation
- Improved controls, joint controls
- Improved logistics
- Joint processes and measurements
-



Thank You
sp.sahu@wcoomd.org

